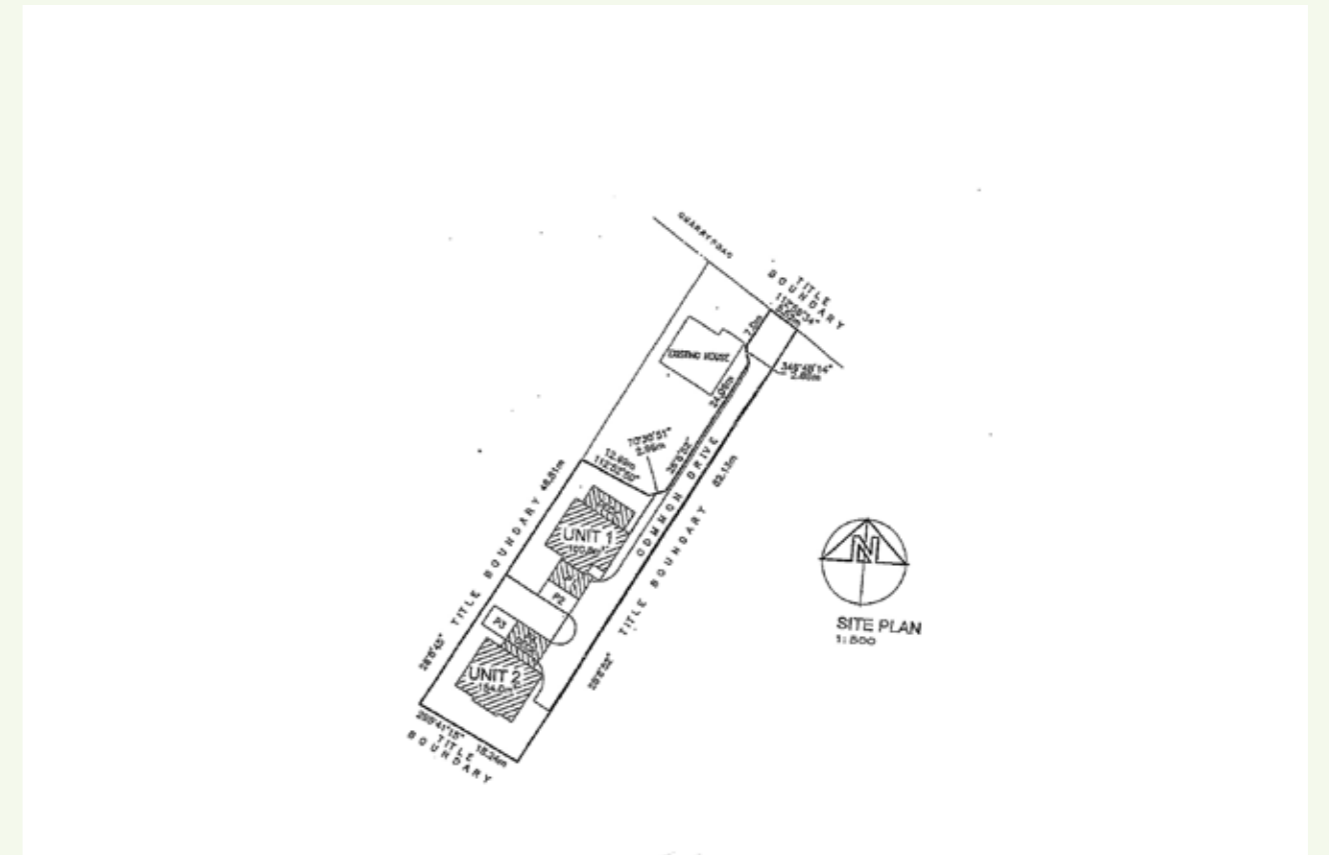


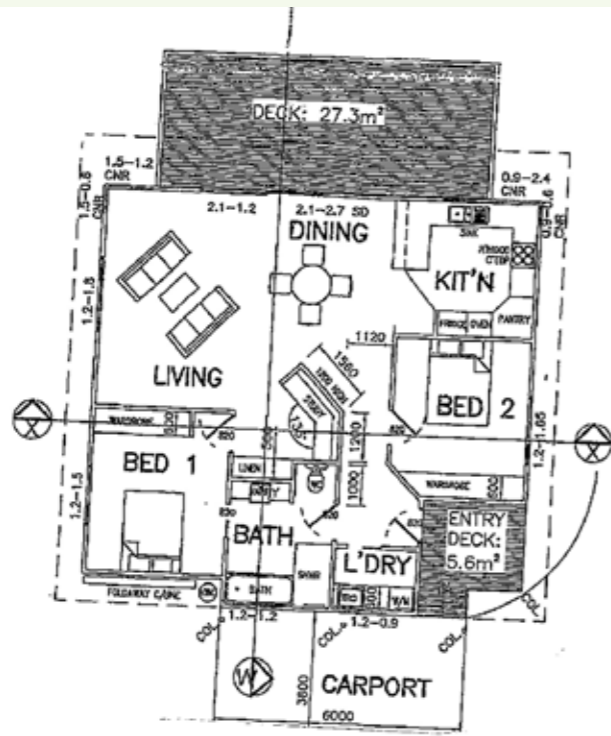
 **FOR SALE**



47A Quarry Road, Mornington

george self
PROPERTY





UNIT 1 FLOOR PLAN



Land Size: 1004 m² approx

Other Features: Development approved

Two villa permit

Good views

Ready to go!

Method of Sale: Private Treaty

Price: \$160,000



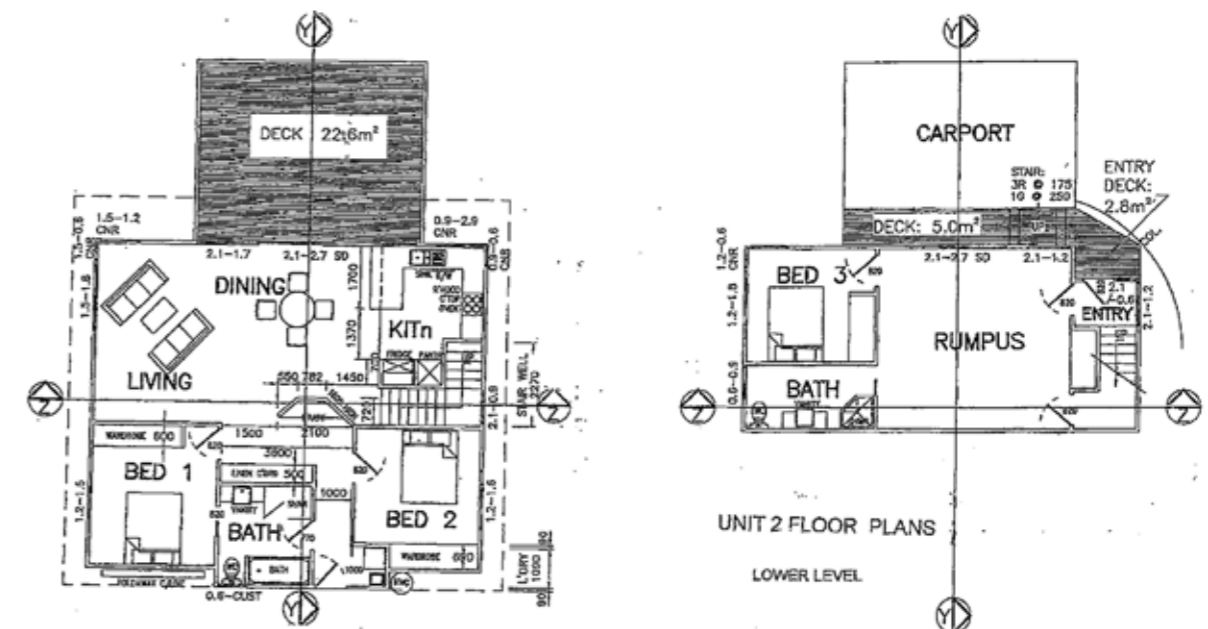
Property description

Fully approved and with all documentation in place, this 2 unit development site is very ready to go! The land purchase comes complete with fabulous plans designed by Dallas Wilson for two modern villas. The two and three bedroom units are both designed to capitalize on the sunny position and to make the most of far ranging views.

Unit 1 offers 100 m² of modern living space plus two bedrooms, carport and sundeck
Unit 2 offers 154 m² of 2 storey living space with 3 bedrooms, 2 bathrooms, rumpus, covered parking and a big sundeck.

All the paper work is done and all you need to do is make the smart decision, buy the block and the concept and start work. This is too good to miss - make your move and make your mark.

Contact us now to obtain more information about this unique opportunity



UNIT 2 FLOOR PLANS

LOWER LEVEL

Scott Leitch

Mobile: 0419 356 606

Email: scott@georgeself.com.au

6248 6344

1 Bayview Road, LAUDERDALE 7021

www.georgeself.com.au

george self
PROPERTY



PTY LTD
ACN 122 237 745