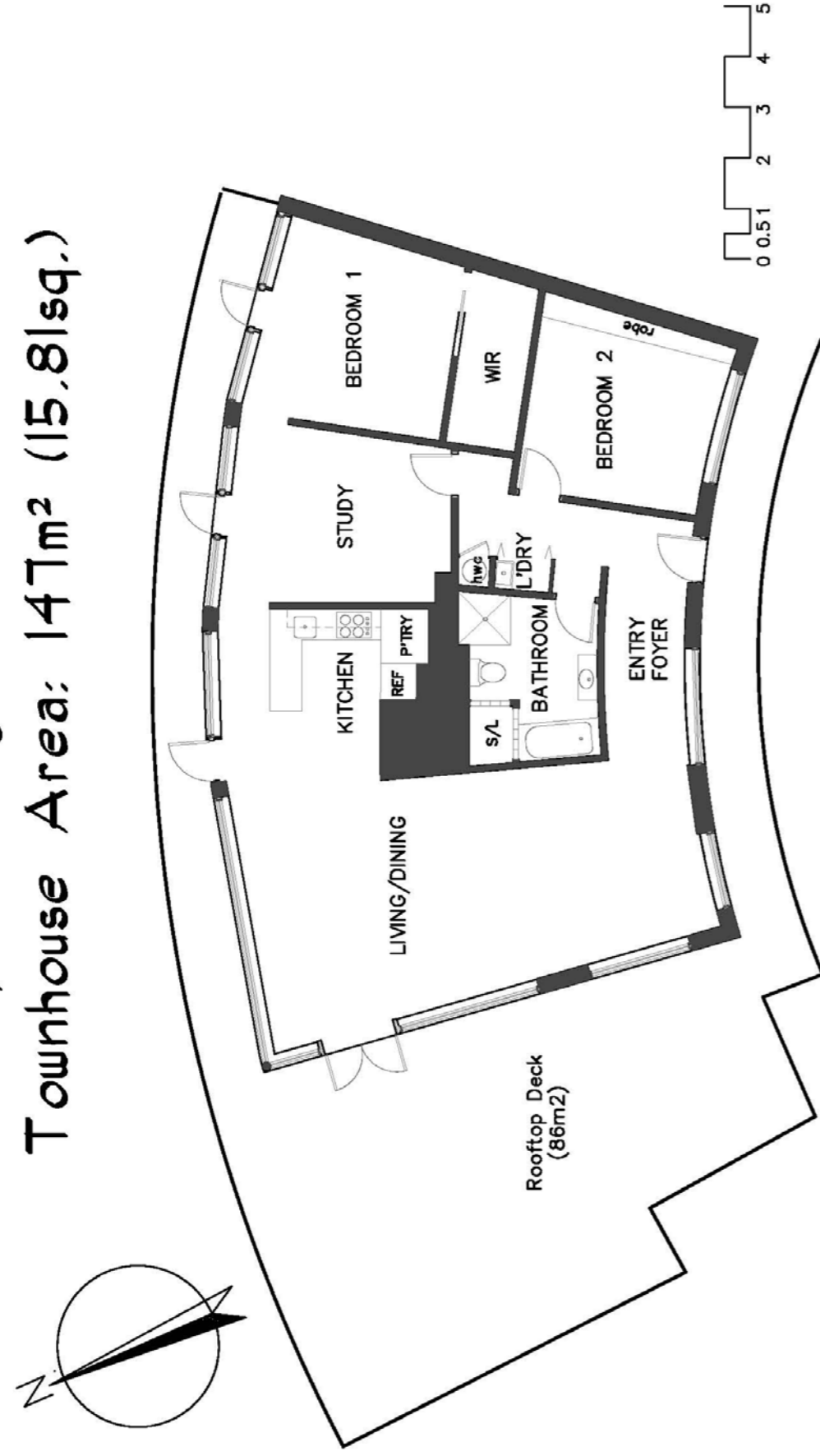


SANDY BAY
14/17 Margaret Street
Townhouse Area: 147m² (15.8lsq.)



IMPORTANT: measurements are approximate—interested parties need to verify

 **FOR SALE**



14/17 Margaret Street, Sandy Bay

george self
PROPERTY





Property description

Sunfilled, north facing penthouse apartment in one of the Bay's landmark buildings

Immersed in a world class panorama, taking in the waterfront of Marieville Esplanade to Mount Wellington, this stunning penthouse commands one of Sandy Bay's best addresses and captures its maximum vantage point.

This stunning abode enjoys a north facing aspect ensuring all day sun and has been luxuriously renovated with a high level of fixtures and fittings, and floor to ceiling windows maximize the captivating outlook.

The functional floorplan includes two double bedrooms plus third or sitting room, together with an opulent marble bathroom. The living zones are lightfilled and generously proportioned, incorporating a sleek new kitchen, and also allowing access to the expansive balcony, perfect for alfresco entertaining in style.

With sense of defined style and a sophisticated yet relaxed ambience throughout, this is a most attractive offering indeed.



House Size: 147 m² approx

Bedrooms: 3

Bathrooms: 1

Parking: Single garage

Material: Brick

Construction: 1962

Other Features: Modern, open-plan living, stunning views

Method of Sale: Private Treaty

Price: High \$500,000s



George Self

Mobile: 0439 356 856

Email: george@georgeself.com.au

6234 4633

119 Collins Street HOBART 7000

www.georgeself.com.au

george self
PROPERTY

