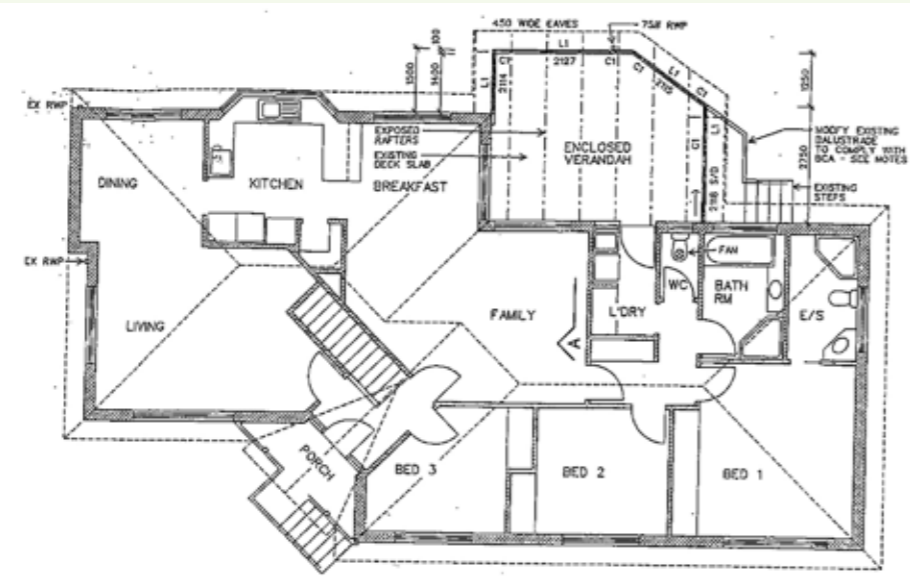


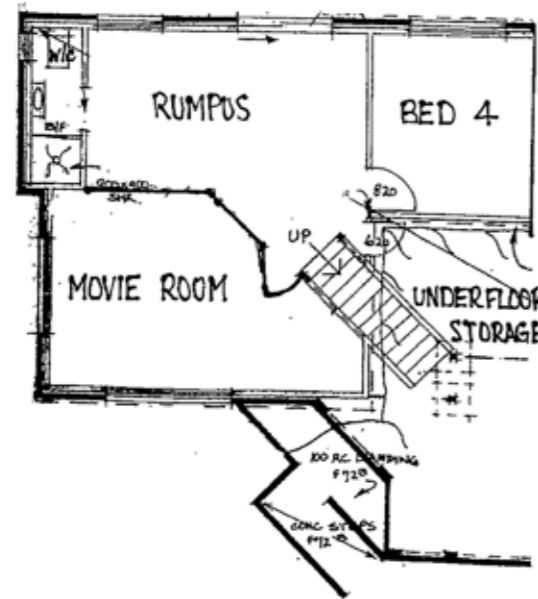
 **FOR SALE**



**16 Karoola Road, Lindisfarne**



UPSTAIRS



DOWNSTAIRS

**george self**  
PROPERTY





House Size:	221 m <sup>2</sup> approx
Land Size:	613 m <sup>2</sup> approx
Bedrooms:	4
Bathrooms:	3
Parking:	Single carport
Material:	Brick
Construction:	1992
Other Features:	Amazing views Theatre room
Method of Sale:	Private Treaty
Price:	Overs over \$510,000



## Property description

This expansive family home, boasting spectacular 270 degree views, is situated in an elevated position in popular Lindisfarne. With views sprawling from Hobart's city lights beyond the Tasman Bridge, Lindisfarne and Geilston Bays and the surrounding hills, you will never tire of the outlook from the expansive windows, or the generous deck.

The floor plan takes full advantage of the multiple living areas both upstairs and down, with this spacious family home providing four bedrooms and three bathrooms, as well as formal lounge and dining rooms and open plan kitchen and family room. A sun drenched sun room opens through bi-fold doors, perfect for entertaining and barbeques all year round, while offering a peaceful suburban panorama. Add to this a feature theatre room, which could easily become a fifth bedroom if required, as well as a good size rumpus downstairs which has access to a beautifully paved courtyard at the rear. This downstairs area could easily be converted to self contained living, with its own bathroom, if so required.

Perched high above Lindisfarne, the home receives all day sun, capitalizing on the natural light and warmth on offer year round.

The paved courtyard and fully fenced yard makes this home ideal for a growing family, with ample space outdoors and generous accommodation on offer.



Craig Sly

Mobile: 0418 136 470

Email: [craig@georgeself.com.au](mailto:craig@georgeself.com.au)

6248 6344

1 Bayview Road, LAUDERDALE 7021

[www.georgeself.com.au](http://www.georgeself.com.au)

**george self**  
PROPERTY

